

Quarterly Construction Enquiry

Quarter 1 2024

Overall Construction

Quarterly Change

4.5%

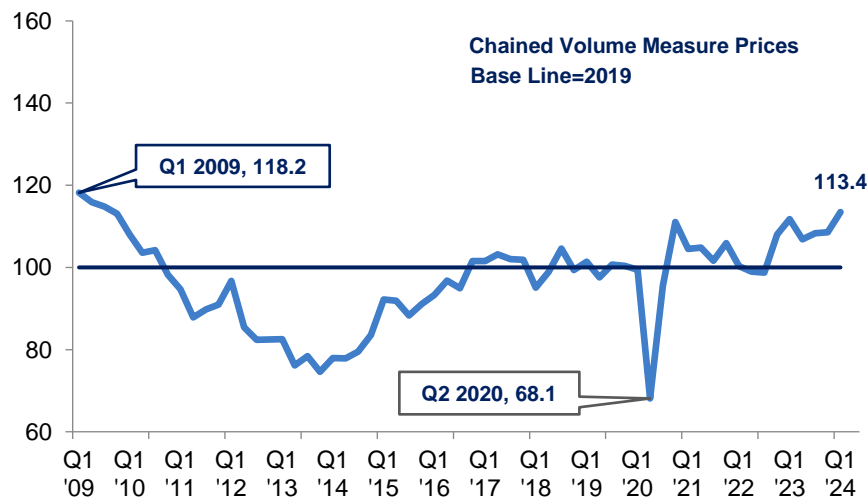


Annual Change

1.5%



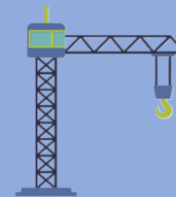
Volume of Construction Output in NI, Q1 2009 – Q1 2024



Change in main sectors

Quarter 1 2024 compared with Quarter 4 2023 and Quarter 1 2023

New Work



Q: + 1.9%
A: + 2.4%

Repair and Maintenance



Q: + 4.6%
A: - 0.8%

Sub sectors

Quarter 1 2024 compared with Quarter 4 2023 and Quarter 1 2023

Housing



Q: + 2.2%
A: - 8.6%

Infrastructure



Q: + 18.3%
A: + 16.9%

Other Work



Q: - 3.0%
A: - 1.4%

Q= Quarterly change / A= Annual change